



SPECIFICATION

- * Body & end caps quality investment casting
- * with ISO 5211 direct mounting pad
- * Adjustable stem packing
- * Available in stainless steel or carbon steel
- * Blow-out proof stem design
- * 100% air tested under water at 80-100 psi
- * Working pressure: 1000/ 800 psi
- * Temperature range -20°F to 450°F
- * with locking function
- * End type: threaded

OPTION

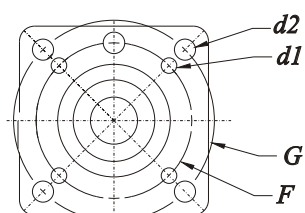
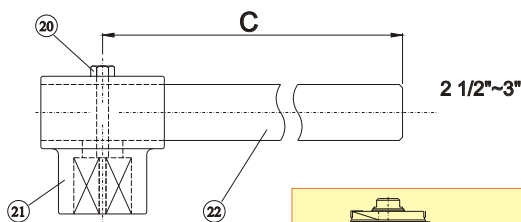
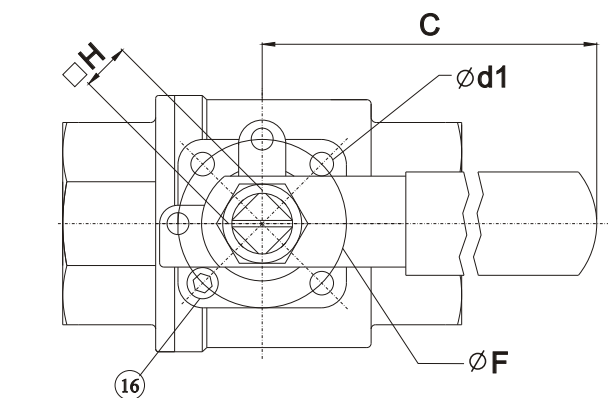
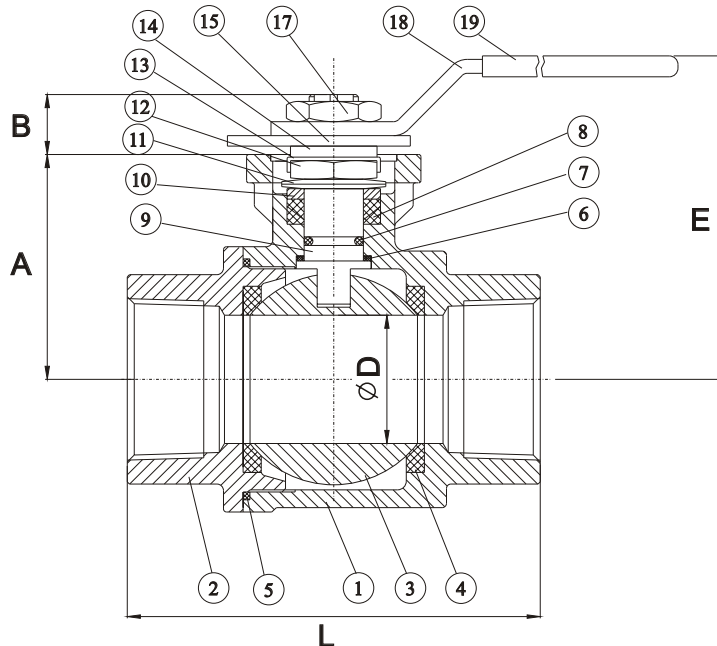
- * Spring handle (dead man handle)
- * Oval handle
- * Automation application
- * PTFE/ PFA coating (40-70 um)
- * Hastalloy C/ Super duplex/ Alloy 20/ Monel

ZIPSON'S 201FD, 2-piece ball valve with ISO direct mounting pad is designed for most of the industrial pipe line as full port product. Different material of soft kits will be applicable for different working circumstance.

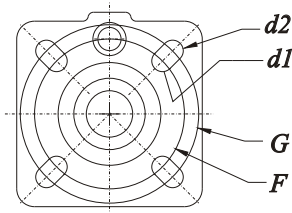
The standard bare stem type is well designed for mounting actuator directly with very low torque value.

201FD can be a standard type to replace the normal manual 2-piece type ball valve in order to simplify the products line & stock for the very competitive prices.

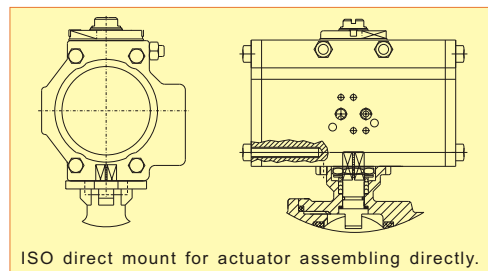
ZIPSON offer pneumatic/ electric actuator and limit switch box/ solenoid valve/ modulating



2-1/2"~3"



1/4"~1-1/4"



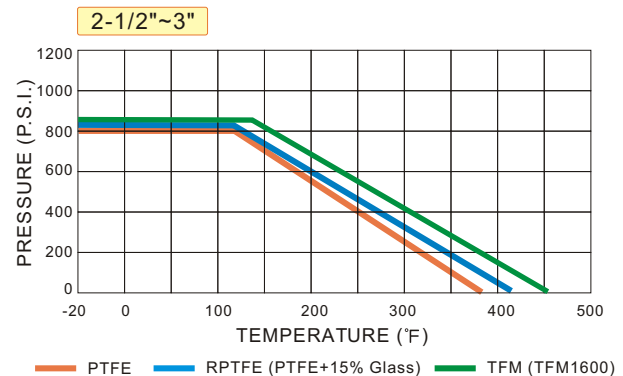
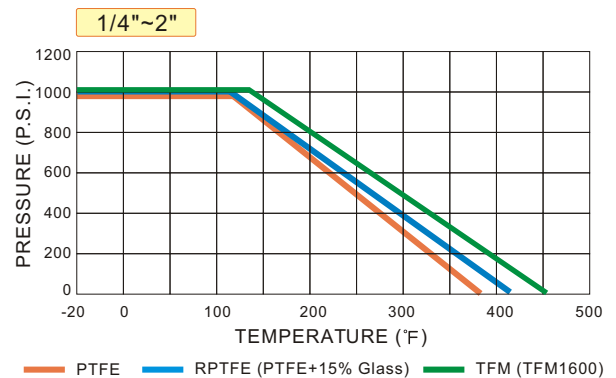
DIMENSIONS (mm)

SIZE	A	B	C	D	d1	d2	E	F	G	H	L
1/4"	37	9	130	11	6.0	6.0	66	36	42	9	56.5
3/8"	37	9	130	12.5	6.0	6.0	66	36	42	9	56.5
1/2"	37	9	130	15	6.0	6.0	66	36	42	9	59.0
3/4"	40	11	130	20	6.0	6.0	69	36	42	9	72.0
1"	48	14	160	25	6.0	7.0	80	42	50	11	79.5
1-1/4"	53.5	14	160	32	6.0	7.0	85	42	50	11	96.0
1-1/2"	63.5	18	205	38	7.0	-	98	50	-	14	104.5
2"	72	18	205	50	7.0	-	106	50	-	14	123.5
2-1/2"	92	22	320	63.5	9.0	11.3	140	70	102	17	160.0
3"	102	22	320	78	9.0	11.3	150	70	102	17	182.2

MATERIALS LIST

ITEM	PART NAME	MATERIALS
1	BODY	CF8M
2	END CAP	CF8M
3	BALL	SS 316
4	SEAT	PTFE
5	GASKET	PTFE
6	THRUST WASHER	RPTFE
7	O-RING	VITON
8	STEM PACKING	PTFE
9	STEM	SS 316
10	GLAND	SS 304
11	DISK WAHSER	SS 301
12	STEM NUT	SS 304
13	NUT STOP	SS 304
14	SPACE WASHER	SS 304
15	PLATER	SS 304
16	STOP PIN	SS 304
17	HANDLE NUT	SS 304
18	HANDLE	SS 304
19	SLEEVE	PLASTIC
20	SET BOLT	SS 304
21	LEVER HEAD	CF 8
22	LEVER	STEEL PIPE

PRESSURE/ TEMPERATURE



BREAK-TORQUE VALUE (Nm/ at 0 psi)

SIZE	1/4"	3/8"	1/2"	3/4"	1"	1 1/4"	1 1/2"	2"	2-1/2"	3"
GREASE	3.5	3.5	5	5.5	7	11	17	23	35	46
NON-GREASE	5	5	6	7	9.5	16	27	30	68	85

Note 1: The greases ZIPSON use including lubricant & anti-seize grease are both SILICONE-FREE.

Note 2: Strongly suggest increasing at least 30%~40% for safety factor for mounting actuator.

Suggestion!

- As dismantle the ball valve, don't forget to replace new Repair Kits, especially the gasket to prevent from leaking.
- PTFE is better than RPTFE (+15% Glass) as operate the valve by actuator, for Glass fiber will hurt the ball and cause the torque value increasing after over 500 times operation. Another good option is TFM or PTFE+25% Carbon.
- Before welding the valves, make sure the ends were dismantled. And welding the dismantled ends. After all the ends be cool, assemble the ends & use new gasket to prevent from leaking.